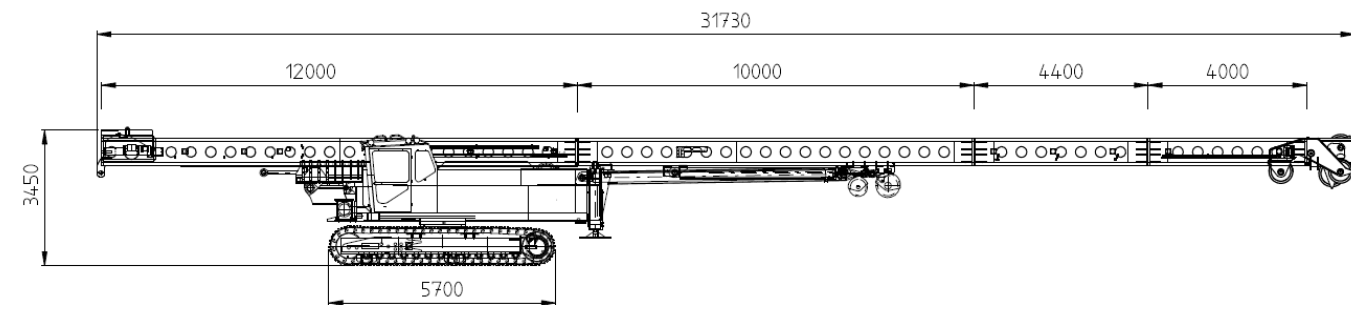
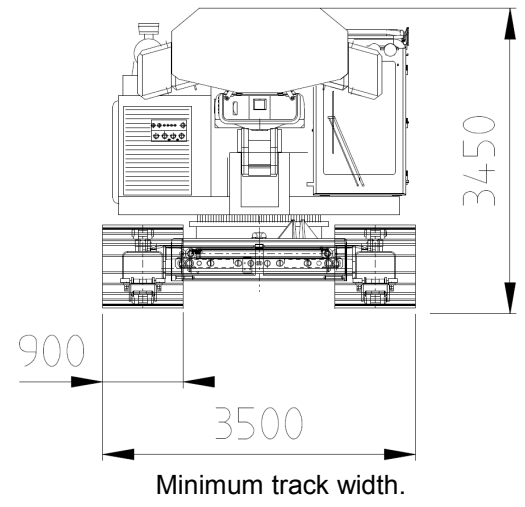
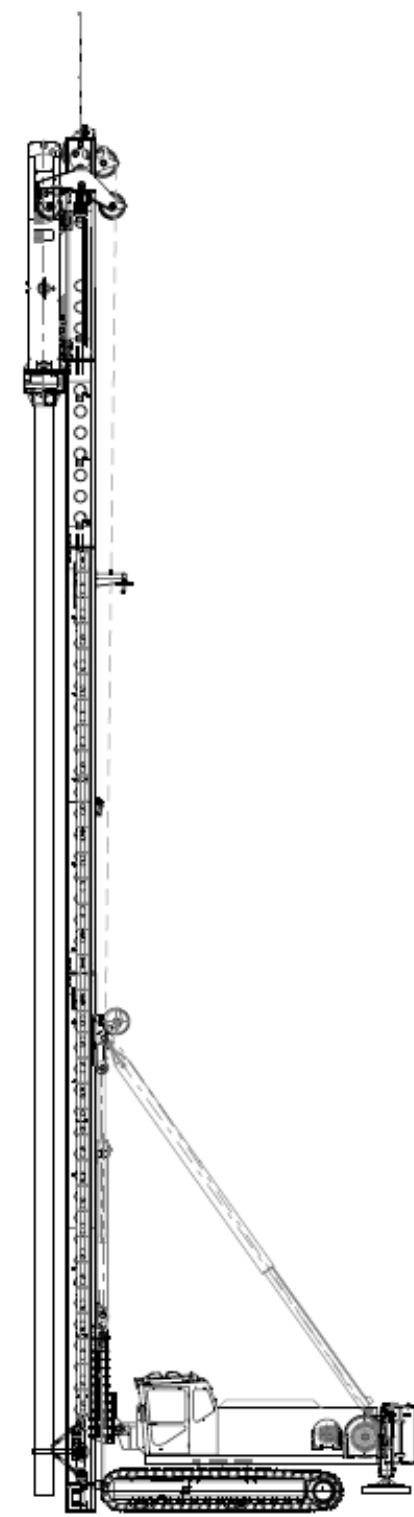


# Transport Dimension

## PM 26 Multipurpose Piling Rig

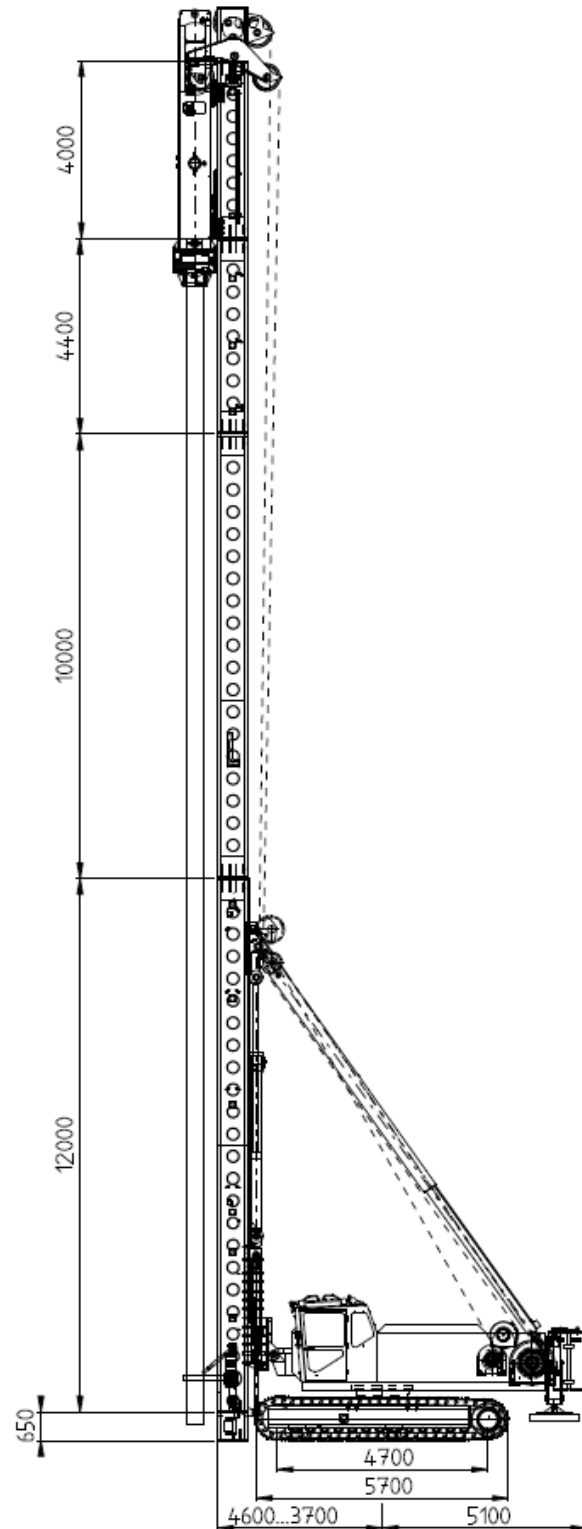


PM 26 transport dimensions with side cathead.



# General Information

**Junttan PM 26** is a multipurpose piling rig for heavy-duty working. But the rig is still one of the lightest and most efficient in its category. The rig can be equipped with pile driving, CFA, cast-in-situ or large diameter piling equipment. The recommended hammer weight is from 5 000 to 12 000 kg and the maximum pile length is 26 meters. The maximum torque is 400 kNm. The rig has proven productivity due to easy and fast handling of piles and top pile driving performance with Junttan hydraulic hammers and rotary heads. An optional side drill or vibrator hammer makes pile driving even more efficient in some soil conditions. With optional Junttan equipment, optimised working set-up of the rig can be easily achieved.



# Technical Data

<b>Leader</b>				
Type	KE 269602			
Length	Leader sections	m	12 + 10+4.4+4	
	Total Length	m	31.73	
Maximum capacity (pile+hammer)		kg	30 000	
Movements	Vertical movement up/down	mm	1700/100	
	Horizontal movement max.	mm	900	
	Inclinations	According to a separate capacity table		
Others	Hydraulic pile arms on leader			
	Leader foot plate			
	Electronic leader inclinometer			
<b>Uppercarriage</b>				
Winches	(single line pull, 1. layer)			
	Main winch (hammer)	kg	25 000	
	Aux. winch (pile)	kg	12 000	
Engine	Make and Model			
	Max. power	kW (hp)	414	(555)
	Fuel tank volume	L	850	
Hydraulics	Hydraulic oil tank volume			
	Max. oil flow	l/min	2x 369 + 2 x 70 at 1900 rpm	
Counterweight	Max. pressure	bar (psi)	350	(5080)
	Weight	kg	4 x 2 000	
<b>Undercarriage</b>				
Type	AV 269902			
	Crawler length	mm	5700	
	Min. width	mm	3500	
	Max. width	mm	4780	
	Triple grouser type track shoes	mm	900	
<b>Transport dimensions</b>				
	Length	m	31.73	
	Width	mm	3500	
	Height without hammer/rotary head	mm	3450	
	Total weight	kg	65 000	
(including counterweight 4 000 kg , excluding hammer )				
<b>Optional equipment / Working method</b>				
	<b>Driven</b>	<b>Cast-in-situ</b>	<b>CFA</b>	<b>Displacement</b>
• Leader hinge	X			
•				
•				
• Extraction cathead		X	X	X
• Extraction device		X		
• Person lift		X	X	X
• Main winch upgrade 25 000 kg	X	X	X	X
• Auxiliary winch upgrade 12 000 kg	X	X	X	X
• Aux. II winch 5 000 kg	X	X	X	X
• Instrumentation	X	X	X	X
• Flat track shoes	X	X	X	X
• Side drill (JD 3)	X			
• Rotary head JD 40B			X	X
• Hydraulic hammer HHK 5-12 ton	X			
		X		
• Additional counterweight, 2000 kg on rear legs	X	X	X	X
•	X	X	X	X
• Other accessories available on request	X	X	X	X
<b>Approvals</b>				
Manufactured according to EN 996 / 791 standards				